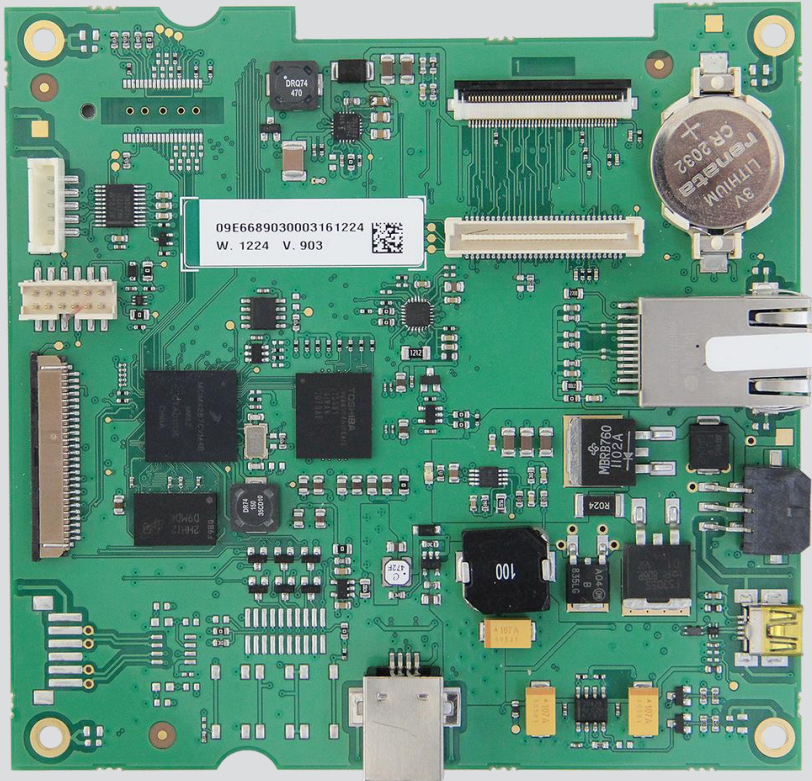


RB-GT4

iMX 287 Board



innovation through creativity

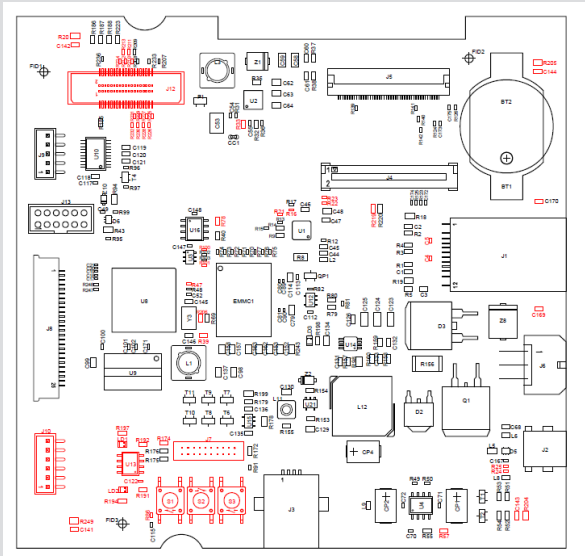
The industrial designed **Reference Board GT4** (Graphic Terminal 4th generation) compact single board integrates a Freescale 454MHz ARM926EJ-S core low-power multimedia application processor with LINUX support ready. The Roj development kit includes all the necessary HW boards, fixtures and LCD related cables, but also includes the Roj-customized API, utility & source codes, including QT™ basic project (time/date setup, touch calibration, application SW update via USB host). The complete host Linux environment “ready to use” is available through a virtual machine disk image for Oracle™ VM VirtualBox.



ROJ®

SPECIFICATIONS

Processor	Freescale i.MX287 @ 454MHz
Dimensions	120x116 mm Open Frame
Memory	DDR2 200MHz up to 256MB Nand Flash with embedded controller (eMMC) 4GB on board
Video	WVGA 800 x 480 18 bpp for Tianma display TM070RRNZ04, 7" up to 262K colours 9" available via display expansion board
Backlight	Led string driver 33VMax @ 20mA
Exp.board	Expansion connector is available for different display WVGA 24 bpp
Touch Screen	Resistive 4 wire integrated
Communication	Ethernet port 10/100Mbit RJ45connector with LED CAN 1 port RS232 1 port USB 1 Host port High-speed -1 Device port for software updates RS485 optional (not mounted) 1 port GPIO 1 port for bubbles keyboard up to 16 keys
RTC	PCF8536T Battery on socket (CR2032)
Accessory boards	RFID card reader RFID MIFARE™ NXP card reader (via RS232 port)
Power supply	+24VDC +/- 20%, Max 25W +9 to 30 VDC acceptable
Temperature	0 °C ~+ 45 °C operating - 25°C ~ + 85°C storage
SW	BSP Freescale (L2.6.31_10.08.01_SDK_source_bundle.tar.gz) OS (target) Linux, Kernel 2.6.35 OS (host) Linux Ubuntu 10.10 (virtual machine disk image ready to use available) GUI Library QT™ 4.8.3 (qt-everywhere-opensource-src-4.8.3.tar.gz)



ROJ®

ROJ srl
Via Vercellone 11 13900 Biella ITALY
Tel: (+39) 0158480111 Fax: (+39) 015 405815
E-mail: comm@roj.com www.roj.com